

LIVE UNITED



IMPROVING LIVES



IN GREATER FRANKLIN COUNTY

MAKING A DIFFERENCE FROM COBURN GORE TO LIVERMORE

United Way of the Tri-Valley Area
218 Fairbanks Rd. PO Box 126 Farmington, Maine 04938
207.778.5048 info@uwtva.org uwtva.org Facebook.com/UWTVA



WELCOME TO YOUR UNITED WAY. Established in 1981, United Way of the Tri-Valley Area unites people and resources to improve people’s lives. Core to what we do is raise money to make community investments. Our Community Partners, grant recipients, and many other collaborators address a broad range of community issues

ranging from violence prevention to ensuring older adults can remain living independently in their own homes.

1 in 3 people rely on United Way-funded services.

UWTVA also engages volunteers to make an impact in Greater Franklin County. Hundreds of compassionate, skilled people help support United Way initiatives, or are connected to meaningful opportunities in the region.



Join United Way as it addresses community needs. Give one hour, one dollar, or one idea—all are important. When united, just think of the difference we can make—together.

I am humbled to be part of this organization that is doing amazing things every day. As always, thank you for all you already do in our region. I invite you to engage, learn, share, provoke, and think about how you can LIVE UNITED. We need you as part of our team because together we can do more to meet the challenges before us, and continue the good work we have been engaged in for more than three and a half decades.

Executive Director



United Ways of Maine

United Way of the Tri-Valley Area works collaboratively with 9 other United Ways in Maine to efficiently raise funds, share best practices, and collectively raise the visibility of United Way and drive results.



The Franklin Volunteer Network is convened by UWTVA. Members meet quarterly to build their capacity to more effectively and efficiently manage volunteers through trainings and networking.



UWTVA is the fiscal agent for the Western Maine CA\$H Coalition. CASH stands for Creating Assets, Savings and Hope. WMCA\$H is one of 10 coalitions in Maine that offers free tax preparation by IRS-trained volunteers. Trained volunteer Opportunity Guides also build individuals’ financial capability by connecting them with resources such as family development accounts or healthcare information.

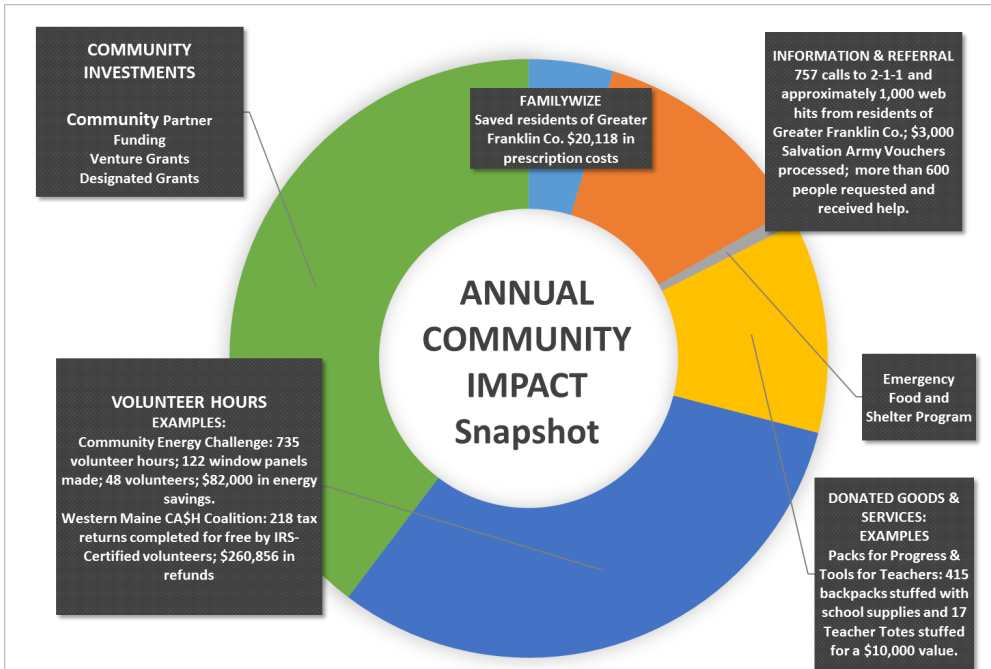


2-1-1 is a 24/7 help line accessed by phone or online at 211maine.org. More than 80,000 calls are placed every year state-wide. If you or someone you needs help and doesn’t know where to turn, call 2-1-1 anywhere in Maine. 2-1-1 is supported by all United Ways in Maine, and the State of Maine in partnership with the Opportunity Alliance.



FamilyWize is a discount prescription medication program in partnership with United Way World Wide. Nobody should have to go without medication due to cost. Discount cards can be found at familywize.org or at United Way of the Tri-Valley Area.

**MAKING CONNECTIONS
COLLABORATING FOR SUCCESS**



VISION

The United Way of the Tri-Valley Area seeks solutions to meet immediate basic human needs, and create long lasting positive change.

MISSION

The United Way of the Tri-Valley Area strives to unite people and resources to improve lives and build a strong and healthy community. It does this by identifying local needs and addressing their root causes, raising funds to meet those needs, and collaborating on local initiatives that create a measurable difference in Greater Franklin County.

GOALS

When you join forces with United Way, you don't simply change lives, you change your community. The serious problems that devastate people's lives, and threaten the welfare of our entire community are many and varied. However, most arise from the same set of root causes. Root causes that we, at the United Way, in collaboration with our Community Partners are working hard to eliminate.

By investing in non-profit organizations that provide services in our local area, building the capacity of local organizations, and coordinating or participating in local initiatives, the United Way of the Tri-Valley Area invests in these community solutions:

RESPONDING TO EMERGENCIES AND MEETING BASIC HUMAN NEEDS

STRENGTHENING FAMILIES AND CHILDREN

INCREASING INDEPENDENCE AND FINANCIAL STABILITY

IMPROVING HEALTH



Chris Kinney of Gifford's Ice Cream gives the "thumbs up" at a Flash Sale of ice cream to benefit United Way. He supports United Way because of the impact United Way has on our communities.

In 2014 (the most current year data is available), rates of child sexual abuse in Franklin County were triple the statewide average per capita, with 17 local victims.

Sadly, 13 reports of child sexual abuse were substantiated in the first six months of 2016 alone.

Since October 2016, 655 students (and counting) in seven Pre K-8 serving schools in Greater Franklin County (representing RSU 73, MSAD 58, Rangeley Lakes Regional School, and Stratton School) have received multi-week violence prevention and health education programming through a pilot partnership of the Franklin County Children’s Task Force, Sexual Assault Prevention and Response Services and Safe Voices.

Early evaluation results are showing a significant increase in students’ abilities to identify who their trusted adults are if they’re in need of support, to name at least two healthy ways to cope when feeling strong emotions, and how to set and respect personal boundaries. Research shows access to this consistent messaging is protective for children and promotes skills around accountability, empathy and respect, which in turn decrease the likelihood of the development of harmful behaviors into adulthood.

TAKING ACTION

INVESTING IN OUR COMMUNITIES

Special events are integral to United Way’s fundraising efforts and volunteers play a vital role. United Way is involved in many special events including:

THE GARDEN PARTY

Hosted by community members that value United Way’s impact, Garden Parties are outdoor events that take advantage of Maine’s fleeting summers. Hosts determine the menu, set up the lawn games, select the music and the fun begins.



Kendra Baker, UWTVA Finance and Operations Coordinator and UWTVA Board member Jennifer Stone at the Garden Party hosted by Peter and Fran Addicott.



Sarah Churchill shows off her on-line auction purchase.

THE GREAT CHARITY AUCTION

A signature event for United Way, the auction raises thousands of dollars that get reinvested in the community, and MANY volunteers are needed to carry out this successful event. While the main live event is held the weekend before Thanksgiving, be sure to check out the new on-line auction on facebook held the week before the auction.

COMMUNITY CHANGE CHALLENGE

A little change can add up to a lot. Do you have a business or organization that would volunteer to host a Community Change Challenge jug? You just might win the coveted trophy and get to designate the money your organization raises to a United Way Community Partner.



If you are interested in volunteering; hosting a Day of Caring or an event; or learning more about posting your volunteer opportunities in the online database volunteer.uwtva.org; contact Community Resource Coordinator Nichole Ernest at volunteer@uwtva.org.

DIAPER DRIVE

Volunteers help organize and collect diapers which are then distributed to our Community Partners and local food pantries.

THE COMMUNITY ENERGY CHALLENGE

Initiated in 2009, the CEC volunteer-led program has saved thousands of dollars in energy costs and kept families warm by building removable, custom-fit window inserts. Those eligible for the Low Income Heating and Energy Assistance Program qualify for up to 6 free panels, others can pay for panels. The payback on panel purchases is within one heating season. More than 2,000 panels having been made to date for householders and for 12 community buildings throughout Greater Franklin County.



Volunteers help hundreds with their taxes every year, saving prep fees and maximizing their returns.

WESTERN MAINE CASH COALITION

UWTV is the fiscal agent for the Western Maine CASH Coalition. CASH stands for Creating Assets, Savings and Hope. Locally, free tax preparation by IRS-trained volunteers is offered. Trained volunteer Opportunity Guides

also build individuals' financial capability by connecting them with resources such as family development accounts or healthcare information.



"I'm a college graduate, and I have a hard enough time figuring out the healthcare marketplace – the pluses and minuses, the credits and debits. I would much rather have volunteers at the Western Maine CASH Coalition

help me with my taxes. They're competent, educated, and trained in it, and there is no charge. I mean, it doesn't get any better than that!"

– Ernie Gurney, Western Maine CASH Coalition tax client from Rangeley

COMMUNITY PARTNERS

"Trust is important to me... I know when I leave Community Dental, I have had the best quality care possible. When you enter, you are greeted by friendly staff who are there to help you leave with a smile."

***- Melody Chase,
Community Dental Patient***



Community Dental

366 US Rte. One,
Falmouth, ME 04105 (mailing);
131 Franklin Health Commons #1,
Farmington, ME 04938 (physical);
Contact: Karen Rickley, (207) 779-2659
karen.rickley@communitydentalme.org
www.communitydentalme.org
Patient assistance program and sliding fee scale support to provide emergency and preventive dental care to children and adults who otherwise could not afford it.

Farmington Area Ecumenical Ministry (FAEM) - ECU HEAT Share Program

PO Box 147, Farmington, ME 04938
Contact: Rev. Susan Crane, (207) 778-2163
faemofficer@gmail.com;
www.faemchurches.org
Heating assistance up to 50 gallons with a \$50 share paid by applicant, for any Franklin County resident unable to afford fuel, after all resources have been exhausted.

Clearwater Ministries

1108 West Mills Rd.,
Industry, ME 04938 (physical);
71 Pratt Mtn. Rd.,
New Vineyard, ME 04956 (mailing).
Contact: Bob Healy, (207) 652-2377
healy379@gmail.com
Emergency food assistance provided through the Clearwater Food Pantry.

Franklin County Children's Task Force

113 Church St., Farmington, ME 04938
Contact: Renee Whitley, (207) 778-6960
rwhitley@fcctf.org; www.fcctf.org
School and community-based education programs to prevent child abuse and neglect and promote healthy relationships.



“The Clothing Exchange at the Children’s Task Force allows me to donate clothes that Able has outgrown, and dress my child nice and reasonable. The people at the Clothing Exchange have been a blessing in my life, they really have!”

- Franklin County Mother

Healthy Community Coalition

105 Mt. Blue Circle, Ste.1,
Farmington, ME 04938
Contact: Jennifer McCormack,
(207) 779-2926
jmccormack@fchn.org; www.fchn.org/hcc
Mobile Health Unit outreach program which provides free health screenings, information and education.

LEAP, Inc.

313 Farmington Falls Rd.
Farmington, ME 04938
Contact: Tony Bolens, (207) 778-4334
tbolens@leapcommunity.org
www.leapcommunity.org
The DREAM program. Family respite and community integration for adults with developmental and cognitive disabilities.

Literacy Volunteers serving Franklin & Somerset Counties

129 Seamon Rd. Suite A, Farmington, ME 04938
Contact: Barbara Averill, (207) 500-3131
literacyvolunteersfs@gmail.com
www.westernmaineliteracy.org
One-on-one tutoring in literacy or math on a confidential basis. English as a Second Language tutoring also offered.

Rural Community Action Ministry

81 Church Hill Rd., Leeds, ME 04263
Contact: Mary Beth Paquette,
(207) 524-5095
marybeth@rcam.net; www.rcam.net.
Housing and homelessness programs including housing rehabilitation, shelter, and financial and technical assistance.

Safe Voices

PO Box 713, Auburn, ME 04212 (mailing)
Contact: Elise Johansen, (207) 795-6744
www.safevoices.org. Helpline 1-800-559-2927 or (207) 778-6107 (Franklin County).
Franklin County outreach, emergency services, and community education for survivors of domestic violence, including court advocacy, support groups, children’s and youth services, and emergency shelter.

SeniorsPlus

8 Falcon Rd., Lewiston, ME 04240
Contact: Holly Zielinski, (207) 795-4010
hzielinski@seniorsplus.org;
www.seniorsplus.org
Provides nutrition and safety checks to homebound older adults through the Meals on Wheels program.

Sexual Assault Prevention and Response Services

PO Box 6, Auburn, ME 04212 (mailing);

- UWTVA coordinates and plans the annual Caravan of Caring that provides community members a first-hand look at a wide range of services that it supports. Participants travel on a bus to various sites to meet Community and Corporate Partners.
- UWTVA trains and orients volunteers as part of onboarding to ensure volunteers feel valued and part of the UWTVA team. Orientation best practices are shared with other organizations.

UWTVA coordinates multiple programs through its Volunteer Center as well...

These include:

PACKS FOR PROGRESS

Backpacks filled with school supplies for Greater Franklin County students are collected throughout the year and distributed in late August to income-eligible students in every school district in the UWTVA service area. Each year an average of 400 backpacks are distributed.

TOOLS FOR TEACHERS

Customized totes with teacher supplies for each of the 17 public schools in Greater Franklin County are distributed in the fall. Great care has gone into surveying teachers’ needs to make the totes as helpful as possible.



Totes for Teachers in the process of being filled.

**COORDINATING
PROGRAMS
MAKING A MEASURABLE DIFFERENCE**

- UWTVA runs a busy office requiring a lot of helping hands. Volunteers provide valuable general office support, and specialized volunteers who assist community members with direct (and often emergency) needs.

- UWTVA is partnering with the Maine Commission for Community Service and Points of Light to become an accredited Service Enterprise organization AND facilitates other non-profits in our region to become certified as well. The goal is to help organizations gain a greater return on volunteer investment and have greater impact in the communities.



“During a recent building season there were 48 different volunteers helping, with many volunteering at the workshops on a regular basis. We had a number of UMF students volunteering which were a valuable addition to our program and community.”

—Amy Palmer, Volunteer Community Energy Challenge Coordinator

- UWTVA provides regular presentations to diverse community groups. These presentation topics range from the health benefits of volunteering to the Return on Investment.
- UWTVA coordinates Days of Caring and Teen Days of Caring. Many days are themed, ranging from “Getting Ready for Winter” to “Caring for our Seniors.”
- UWTVA recruits and trains student volunteers, sparking a passion for service early. (UMF Interns, Upward Bound, etc.)
- UWTVA is in the process of planning and offering a new, week-long *Summer Experience*, designed to build leadership through service in 8th and 9th grade students. This is in partnership with the University of Maine at Farmington and GEAR UP.

227 Main St., Farmington, ME 04938 (physical)
 Contact: Meagan Davis, (207) 778-9522
 meagan.davis@sapars.org; www.sapars.org
 School-based sexual assault crisis intervention, prevention, and support services.

Sexual Assault Prevention and Response Services Children’s Advocacy Center

See address above
 Contact: Marty McIntyre, (207) 778-9522 or (207) 784-0436; marty.mcintyre@sapars.org
 Forensic interviewing of sexually abused children and cognitively-impaired adults.

United Methodist Economic Ministry

1458 Salem Rd., Salem Township, ME 04983
 Contact: Rev. Michele St. Cyr, (207) 678-2611. umem@tdstelme.net; www.gbmg-umc.org/umem.
 Fostering independence and providing assistance with basic needs, including housing repairs, food, clothing, and fuel in northern Franklin County.



Community Partner Craig Zurhorst gives Lisa Laflin updated schedules for Western Maine Transportation Services, Inc.

Western Maine Community Action

PO Box 200, E. Wilton, ME 04234 (mailing); 20A Church St., East Wilton, ME 04234 (physical)
 Contact: Steve Johndro, (207) 645-3764
 sjohndro@wmca.org; www.wmca.org
 Helping residents of Franklin County access heating assistance and other resources.

Western Maine Homeless Outreach

547 Wilton Rd., Farmington, ME 04938 (physical); PO Box 830, Farmington, ME 04938 (mailing)
 Contact: Tricia Plourde, (207) 491-4100
 wmhomelessoutreach@gmail.com.
 Emergency shelter and case management.

Western Maine Transportation Svcs.

76 Merrow Rd., Auburn, ME 04210
 Contact: Craig Zurhorst, (207) 333-6972 x 6
 czurhorst@westernmainetrans.org
 www.wmtsbus.org
 Community Rides Program which allows WMTS to provide public transportation in Greater Franklin County to those who otherwise would not be able to access medical and other critical services.

Work First, Inc.

PO Box 86, Farmington, ME 04938
 Contact: Linda LaRue-Keniston, (207) 778-3200 x 22;
 lindalk@workfirstinc.org
 www.workfirstinc.org
 Meaningful work experiences for adults with developmental disabilities. This increases independence and improves quality of life.

VENTURE GRANT RECIPIENTS

Venture grants fund new and innovative programs that are collaborative, sustainable, and meet a community need.

Rangeley Friends of the Arts

After School Youth Arts Program

Judy Diaz

Spruce Mtn. Elementary School Food Pantry

Literacy Volunteers Head Start

Parents of Head Start Children Tutoring Program

Western Maine Storytelling

Neighbors Building Community Through Sharing Their Stories



THE GARY A. LAGRANGE COMMUNITY IMPACT AWARD Verso Androscoggin Mill Employees

Verso Androscoggin Mill Employees consistently go above and beyond to support the Greater Franklin County region. Their generosity seems to be endless - whether it be to help a fire victim recover from a devastating loss, or adopting families in need at Christmas, Verso employees rise to the occasion and do not seek the spotlight. Each year Verso employees at the Androscoggin Mill raise almost one third of the United Way cash contributions, and more than half of their employees contribute – even during challenging times.

COMMUNITY IMPACT AWARD HONORABLE MENTION Sally Speich

Sally Speich is the current Chair of Literacy Volunteers. Sally's drive and get 'er done approach led her to contribute over 500 hours last year, and enabled Literacy Volunteers to leverage \$120,833.45 in volunteer service.

Volunteers are an incredible asset to our community. Hours volunteers donate to making our community a better place are an important part of our community impact and are carefully tracked. They are even part of our overall Campaign goal each year. That's how important service is to United Way.



Volunteers stuff backpacks with supplies as part of Packs for Progress.

UWTVA established the Volunteer Center in 2009 to support a wide variety of activities that provide meaningful experiences, strengthen the sector and make a positive difference.

Specifically:

- UWTVA matches interested volunteers with local volunteer opportunities that are constantly kept up to date.
- UWTVA provides quarterly facilitation of the Franklin Volunteer Network, an organization of 106+ members and growing with a focus on professional networking, capacity building and information sharing.

CONNECTING VOLUNTEERS STRENGTHENING THE REGION